

The image features two large, thick black L-shaped brackets. One is positioned in the top-left corner, and the other is in the bottom-right corner. They are oriented towards each other, framing the central text.

PHILOSOPHY OF AI

Jae Ryung Chung

Table of contents

- Philosophy of AI → Overview, discussion
- AI depiction in movies
 - *The Moon*
 - *Blade Runner*
 - *Free guy*
 - *Ex Machina*
- Controversy cases in real life
 - *Crime possibility prediction*
- Ultimate questions → thoughts and discussion



AI ETHICS

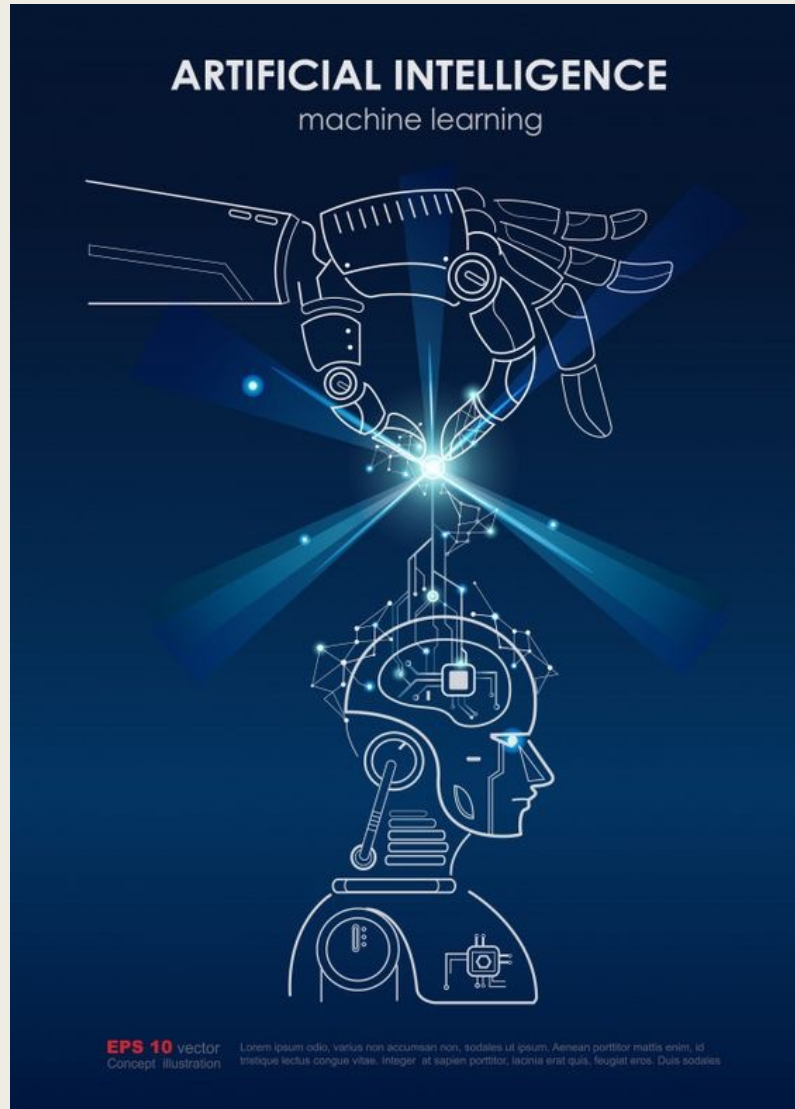
Your initial thoughts



AI Ethics – Initial Thoughts?

- Ability to learn
- Copy rights of data set
 - *Drawing ai*
- Black box

AI Ethics – Initial Thoughts?



- Artificial Intelligence
 - *Machine Learning AI*
 - *Memory Transplant*
 - *Human Intelligence vs Animal Intelligence*
 - *Social Intelligence? Autism? Human Intelligence?*
 - Humans learn and gain intelligence, too

SCI-FI MOVIES ON AI

The Moon / Blade Runner / Free Guy / Ex Machina

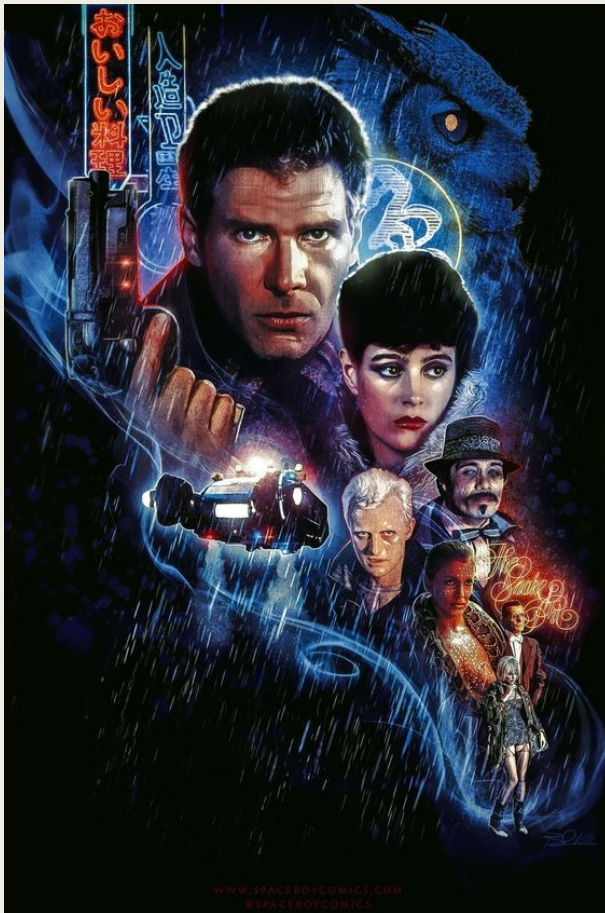


Free Guy (2021)



- Story of a bank teller who discovers that he is a non-player character(NPC) in a MMORPG
- Then he discovers who himself is, and partners with a player to find evidence that a gaming company's CEO stole the player's game's source code.

Blade Runner (1982)



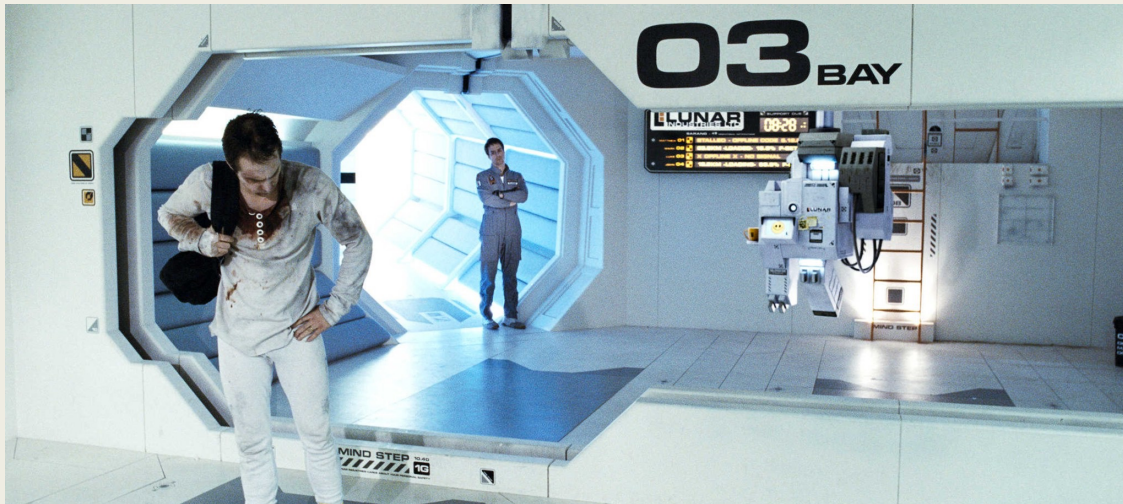
- Deckard, whose job as a "blade runner" was to track down bioengineered humanoids known as replicants and terminally "retire" them
- Rachael, the assistant of the CEO of the company that creates replicants, is a replicant who believes she is human.
- false memories to provide an "emotional cushion," and that she has no knowledge of her true nature.

Ex Machina (2014)



- Caleb is a computer programmer who is offered by search engine company CEO, Nathan, to conduct Turing test to a humanoid robot, Eva, who is sentient.
- He later feels emotions towards Eva, and also moral repulsion towards Nathan.
- He tries to help Eva, but...

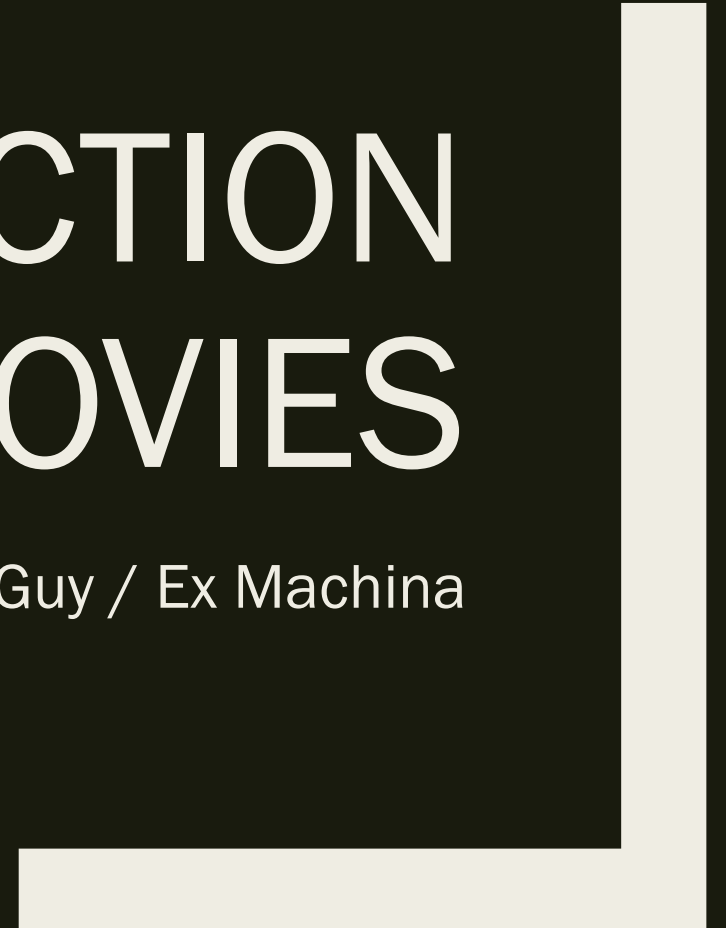
Moon (2009)



- Sam Bell is worker at the back of the moon
- He works for three years, apart of his family and crave to go back to his wife and daughter
- One day, he discovers he is not the only Sam Bell, but in fact...

AI DEPICTION IN MOVIES

The Moon / Blade Runner / Free Guy / Ex Machina



1. Distinction between Human Intelligence and AI

- What are the key difference between ai and human intelligence?
- Thoughts:
 - *Human intelligence created ai*
 - *All human created by human*
 - Biological process. Vs mathematical way
 - *Singularity?*
 - *Purpose,, learning scenario*
 - Faster, evolving
 - Fear, estimating potential
- If AI gets smarter, gain its own personality, how could we tell difference between artificial intelligence and human intelligence?
- The transition from AI to real personality

1. Distinction between Human Intelligence and AI

■ Thoughts:

- *What is human / what is ai*
- *Intelligent? Coma?*
- *Technological implant in brain, computer part in brain? → ai?*
- *General ability,,*
 - *IQ.. Fullest potential /*

Blade Runner

Ability of sympathy, empathy

Emotions – happiness, sadness, sense of loss

Will to live



Moon

Sacred sacrifice of human



2. How do we know if we are not AI?

- Thoughts:

- Singularity

- *A hypothetical point in time at which technological growth will become radically faster and uncontrollable, resulting in unforeseeable changes to human civilization.*

Blade Runner

Voight-Kampff Test : designed to distinguish replicants from humans based on their emotional responses to questions.



Blade Runner

Memory transplant, if ai does not recognize itself as ai?
How do you distinguish ai and human intelligence?



Ex Machina

Caleb gets confused, and starts doubting that he himself may be a humanoid robot. How could you tell really?



3. Human Rights of AI

- Turning off the AI will be 'killing' the AI
 - Do AI has same human rights?
 - If so, how?
 - If not, why not?
 - *Emotion*
 - *Feel pain, feel loss*
 - *Sense of empathy*
- Memory transplant? Clone?
 - Biologically synthesized body → say there is no issue considering the physical body, then is that artificial-human not human?
- Animals → animal rights/welfare
- Slaves,, (blade runner/ex machina)
 - *Why create, if afraid,, to test our ability*
- Testing / task → conscious for that? (..clones?)
- program (editable) .. Rights
 - Copy,, same right?
 - Computer advance?
 - If not sentient

3. Human Rights of AI

- program (editable) .. Rights
 - Copy,, same right?
 - Computer advance?
 - If not sentient
- Free will

Free Guy

The game company CEO tries to shut down the game, but the NPCs step out to protect their own home.



Ex Machina

Nathan and Caleb are discussing on turning off Eva's mind, and Caleb feels sympathy towards it



4. Other Intelligences

- Mainstream ai research focuses only on human intelligence
- Fields
 - *Communication*
 - *Sensory abilities*
 - *Social abilities*
- Thoughts:

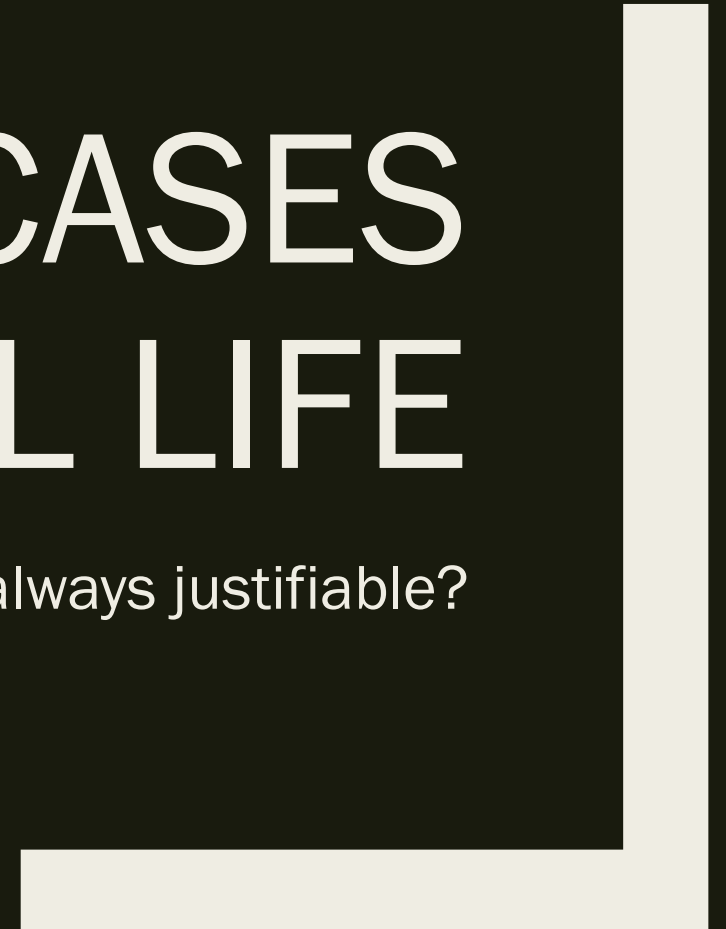
Ex Machina

Nathan and Caleb are discussing on turning off Eva's mind, and Caleb feels sympathy towards it



CONTROVERSY CASES IN REAL LIFE

Are predictions always justifiable?



Will AI predictions make discriminations?

AI profiles predict crimes fast but can discriminate against the poor

2 min read · Updated: 06 Mar 2022, 11:58 PM IST

Prasid Banerjee, Abhijit Ahaskar



Civil society organizations believe AI systems in law enforcement can discriminate against the most marginalized in society. (Photo: AFP)

<https://www.livemint.com/technology/tech-news/ai-profiles-predict-crimes-fast-but-can-discriminate-against-the-poor-11646590850806.html>

Real life examples

- Experiences, thoughts:
 - *Copy rights of artist / ai artists*
- Art genuine?
 - *Learn from*
 - *Come up with totally new*
 - *Creativity of human*
 - Mimic random variable
 - Pattern interpolation
- Re offending prejudice, skin color
- Autonomous driving
 - *Decision in inevitable scenario*
 - *Justifiable algorithm?*
 - *Who is going to be responsible*

ULTIMATE QUESTIONS



?

How could we prevent AI to be
on wrong hands?

Discussions

- blade runner
 - *Revenge.. But why change suddenly?*
 - *Deckard and Rachael*
 - Knowing she is replicant.. Still loves
 - Blade runner himself is a replicant (..?!)
- A.i.
- Ai raises challenges to human intelligence
- Before ai is self conscious!

A thick black L-shaped frame is positioned on the left and right sides of the slide. The left side consists of a vertical bar extending from the top to the bottom, and a horizontal bar extending from the top of the vertical bar towards the right. The right side consists of a vertical bar extending from the top to the bottom, and a horizontal bar extending from the bottom of the vertical bar towards the left.

PHILOSOPHY OF AI

THANK YOU